

**Offered For Sale:**

**5**

**Pratt & Whitney**

**PW2037**

**Aircraft Engine Modules**



**Exclusively By:**



**Date: June 21, 2007**



**Pratt & Whitney 2037  
Engine Modules  
Available For Sale**

The engine modules are currently on lease to American Airlines. The current lease is ending on May 28, 2008. ACI is accepting immediate offers on these engine modules and the attached lease.

Engine Manufacturer: Pratt & Whitney

Engine Type: 2037

Serial Numbers: A95055, DLDLA25831, DJNBAH2890, C27205 & B27282 (Currently installed in engine serial number 727227)

Current Lessee: American Airlines

Lease Termination Date: May 28, 2008

Monthly Lease Rate: \$60,000 (the last payment is reduced)

Current Status: On-wing

Return Provisions: The lease return provisions are very strong requiring fresh, zero (0) time LLPs and modular shop visits. Please see the lease return provisions as attached.

Configuration: Bare (no QEC)

Price: Make An Offer

## ENGINE TECHNICAL SPECIFICATIONS

**Engine Type: PW2037**

**Current Maintenance Status**

**As Of: April 30, 2007**

<b>Serial Number</b>	<b>TT/TC</b>	<b>TSLSV</b>	<b>CSLSV</b>	<b>1<sup>st</sup> LLP Limiter Due In</b>
727227	30,591 Hours 11,318 Cycles	357	139	3,873 Cycles

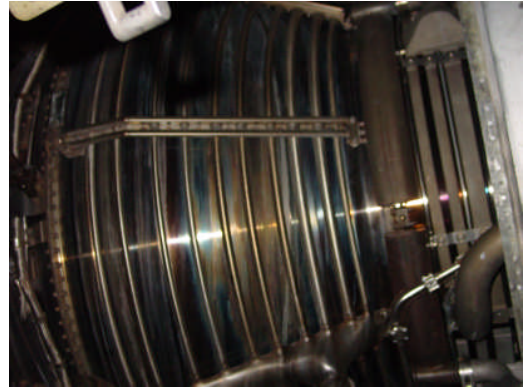
## PW2037 Engine Disk Life

Effective: April 30, 2007

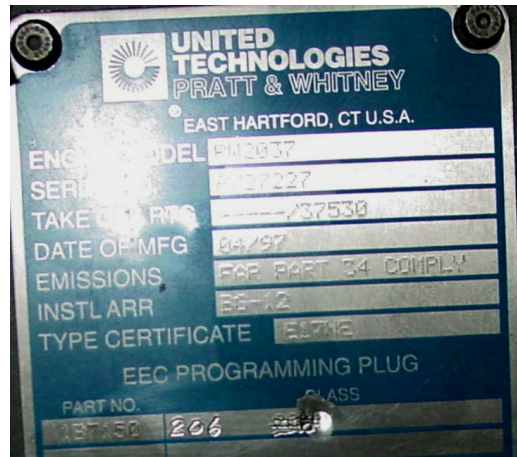
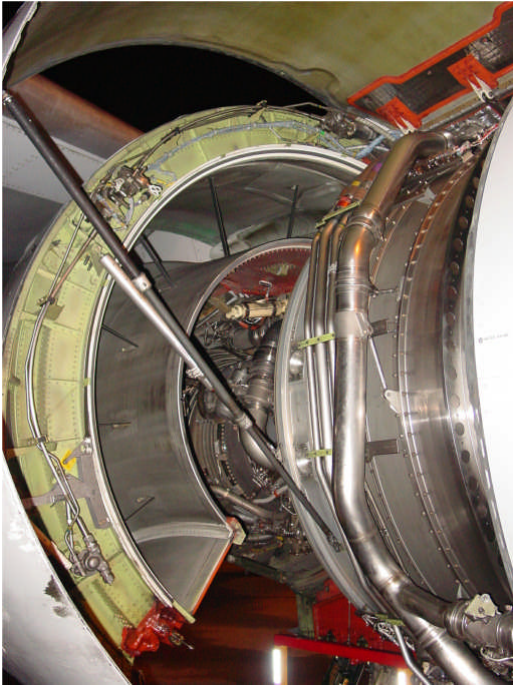
ENGINE S/N 727227				
Item	Manufacturers Part Number	Cycle Life Limit	Cycle Life Remaining	% of Life Remaining
Front Compressor Hub	1A9001	20,000	13,873	69.4%
LPC Drum Rotor Disk Assy	1B6503-01	20,000	13,873	69.4%
LPC Stage 2 Disk	1B6503-02	20,000	13,873	69.4%
LPC Stage 3 Disk	1B6503-03	20,000	13,873	69.4%
LPC Stage 4 Disk	1B6503-04	20,000	13,873	69.4%
LPC Stage 5 Disk	1B6503-05	20,000	13,873	69.4%
HPC Front Hub	1B3506	20,000	11,134	55.7%
HPC Drum Rotor Disk Stg. 7-15	1B7398	20,000	11,134	55.7%
HPC Stage 7 Disk	1A9207	20,000	11,134	55.7%
HPC Stage 8 Disk	1A3808	20,000	11,134	55.7%
HPC Stage 9 Disk	1A3809	20,000	11,134	55.7%
HPC Stage 10 Disk	1B2610	20,000	11,134	55.7%
HPC Stage 11 Disk	1B2611	20,000	11,134	55.7%
HPC Stage 12 Disk	1B2612	20,000	11,134	55.7%
HPC Stage 13 Disk	1B3613	20,000	11,134	55.7%
HPC Stage 14 Disk	1B4514	20,000	11,134	55.7%
HPC Stage 15 Disk	1B3815	20,000	11,134	55.7%
HPC Drum Rotor Disk Stg. 16-17	1B6275-01	20,000	11,134	55.7%
HPC Stage 16 Disk	1B1700-02	20,000	11,134	55.7%
HPC Stage 17 Disk	1B1700-03	20,000	11,134	55.7%
HPC Drive Shaft	1B5100-02	30,000	21,134	70.4%
HPC Stage 17 Airseal	1B5537	20,000	11,134	55.7%
HPT Front Hub	1B8002	15,000	8,873	59.2%
*HPT Stage 1 Outer Airseal (TOBI)	1B5554	15,000	3,873	25.8%
*HPT Stage 1 Disk	1B3601-001	15,000	3,873	25.8%
Blade Retaining Plate, 1st Stage	1B3960	15,000	8,873	59.2%
Blade Retaining Plate, 2nd Stage	1B7495	15,000	4,311	28.7%
HPT 1-2 Stage Airseal	1A8209	15,000	4,311	28.7%
3rd Stg Airseal Support	8A2154	20,000	13,873	69.4%
LPT Disk 3rd Stg.	8A2135	20,000	13,873	69.4%
LPT Disk 4th Stg.	8A2910	20,000	13,873	69.4%
LPT Disk 5th Stg.	8A2138	20,000	13,873	69.4%
LPT Disk 6th Stg.	8A1026	20,000	13,873	69.4%
LPT Disk 7th Stg.	8A2166	20,000	13,873	69.4%
Turbine Airseal 3rd Stg.	8A2167	20,000	13,873	69.4%
Turbine Airseal 4th Stg.	8A2094	20,000	13,873	69.4%
Turbine Airseal 5th Stg.	8A2095	20,000	13,873	69.4%
Turbine Airseal 6th Stg.	8A2806	20,000	13,873	69.4%
Turbine Airseal 7th Stg.	8A2807	20,000	13,873	69.4%
LPC Drive Shaft	1B6326	30,000	18,682	62.3%
Rear Turbine Hub	1A3619	30,000	23,873	79.6%
<b>SUM TOTAL</b>		<b>820,000</b>	<b>500,654</b>	<b>61.1%</b>
<b>AVERAGES</b>		<b>20,000</b>	<b>12,211</b>	<b>61.1%</b>
<b>*Life Limiting Components</b>				

ACI and the engine owner expressly disclaim any and all liability for information, express or implied, contained in or omitted from this Fact Sheet. Nothing contained herein is, or shall be relied upon, as a representation made by ACI or the engine owner. Only specific written representations made by the engine owner in a written definitive agreement shall have any legal effect, subject to such limitations and restrictions as may be specified in such agreement.

**Pictures:**



**Pictures:**



ACI and the engine owner expressly disclaim any and all liability for information, express or implied, contained in or omitted from this Fact Sheet. Nothing contained herein is, or shall be relied upon, as a representation made by ACI or the engine owner. Only specific written representations made by the engine owner in a written definitive agreement shall have any legal effect, subject to such limitations and restrictions as may be specified in such agreement.

## LEASE RETURN PROVISIONS

### 16. RETURN OF EQUIPMENT

- a. Upon expiration of the Lease Term or other valid termination of this Lease, Lessee will return the leased Equipment to the Return Location or other mutually agreed location.
- b. In addition to any other requirements of this Lease, upon return of the Equipment to Lessor, all Equipment will have completed a module standard repair (MSR) or equivalent heavy maintenance under Lessee's FAA-approved maintenance program as then in effect within 90 days prior to the return of the Equipment under this Section 16, and all Equipment will have affixed a current serviceable tag from a 145 Repair Station pursuant to U.S. FAA requirements. In addition, Lessee shall provide Lessor with a FAA Form 8130-3 and a detailed report of all work performed with respect to each item of Equipment. Life limited parts in the Modules will have their full life remaining. If any life limited part does not have its full life remaining, then Lessee will pay Lessor the amount obtained by multiplying (i) the then current Pratt & Whitney catalog price for the part, by (ii) the Prorated Usage (as defined below) of the part. The "Prorated Usage" of a part shall be equal to a fraction, the numerator of which is equal to the number of cycles since "new" at the time of return of the Equipment, and the denominator of which is equal to the number of cycles in the full interval between replacement (i.e., the life limit) with respect to such part under Lessee's FAA approved maintenance program and the Manufacturer's specifications.
- c. Lessee will furnish Lessor a non-incident and non-accident statement relating to the Equipment at the return of the Equipment.
- d. Lessee will remain obligated to continue to pay Monthly Rent until such time that the Equipment is returned to Lessor by Lessee in accordance with the terms and conditions of this Section 16. The amount of such Monthly Rent shall be equal to the Per Diem Rent multiplied by the number of days during the period from but not including the Expiration Date too and including the date on which Lessee returns the Equipment to Lessor in accordance with the terms and conditions of this Section 16.
- e. Lessor has the right to inspect the Equipment after redelivery and, to the extent provided in this Lease, Lessee shall be liable to Lessor for damages suffered or incurred by Lessor as a result of the Equipment's failure to meet the return conditions set forth in this Section 16.